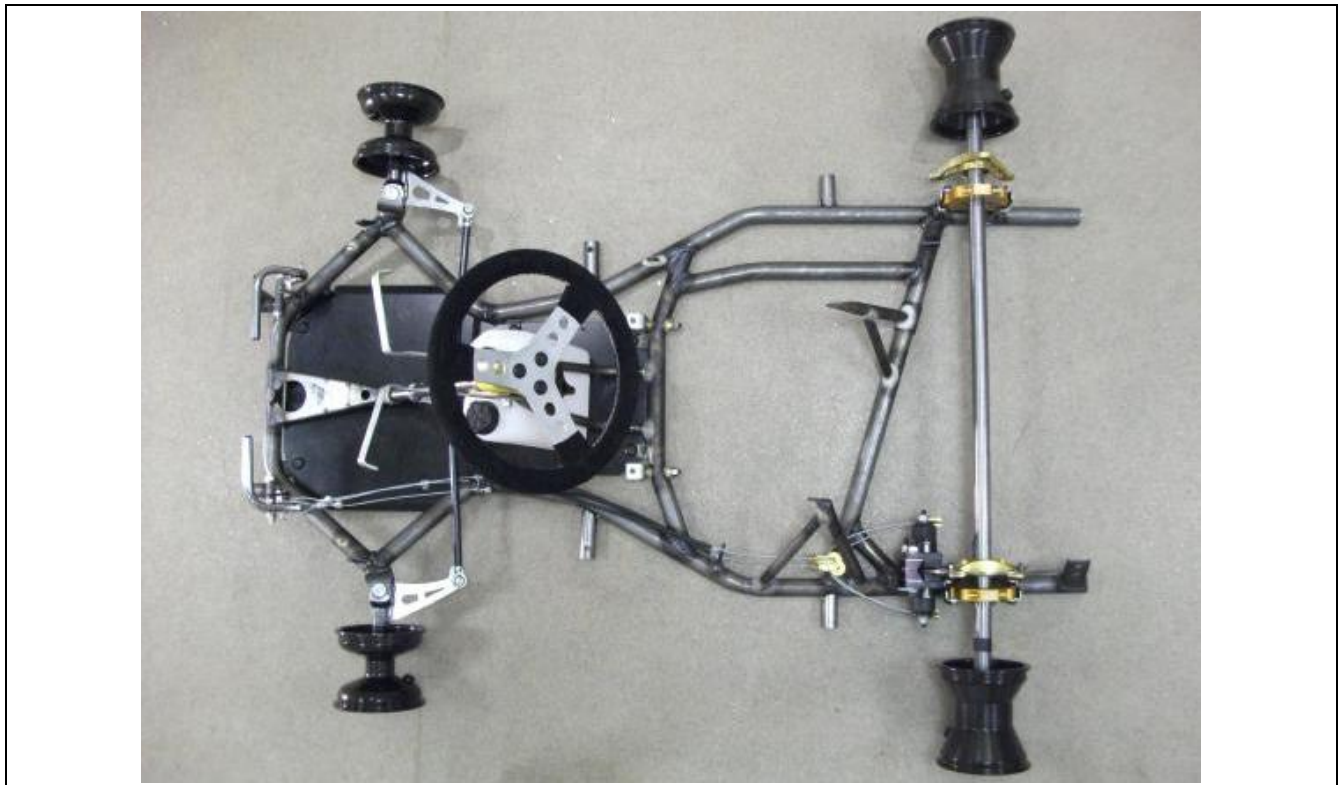


HOMOLOGATION OF CHASSIS

<i>Manufacturer</i>	Zip Kart
<i>Make</i>	Zip Kart
<i>Model</i>	Lightning
<i>Category</i>	Formula Cadet
<i>Valid from</i>	1 st January 2011
<i>Valid until</i>	31 st December 2019
<i>Number of pages</i>	4

This Homologation Form reproduces descriptions, illustrations and dimensions of the chassis at the moment of the MSA homologation. The Manufacturer may modify them, but only within the limits set by the MSA regulations in force and with the written agreement of the MSA.



Photograph of complete chassis less seat and bumpers

SIGNATURE AND STAMP OF THE MSA

	Date: 1st January 2011 Signed by: John Ryan Position: MSA Technical Executive
---	---

TECHNICAL DRAWINGS OF FRAME WITH MAIN DIMENSIONS

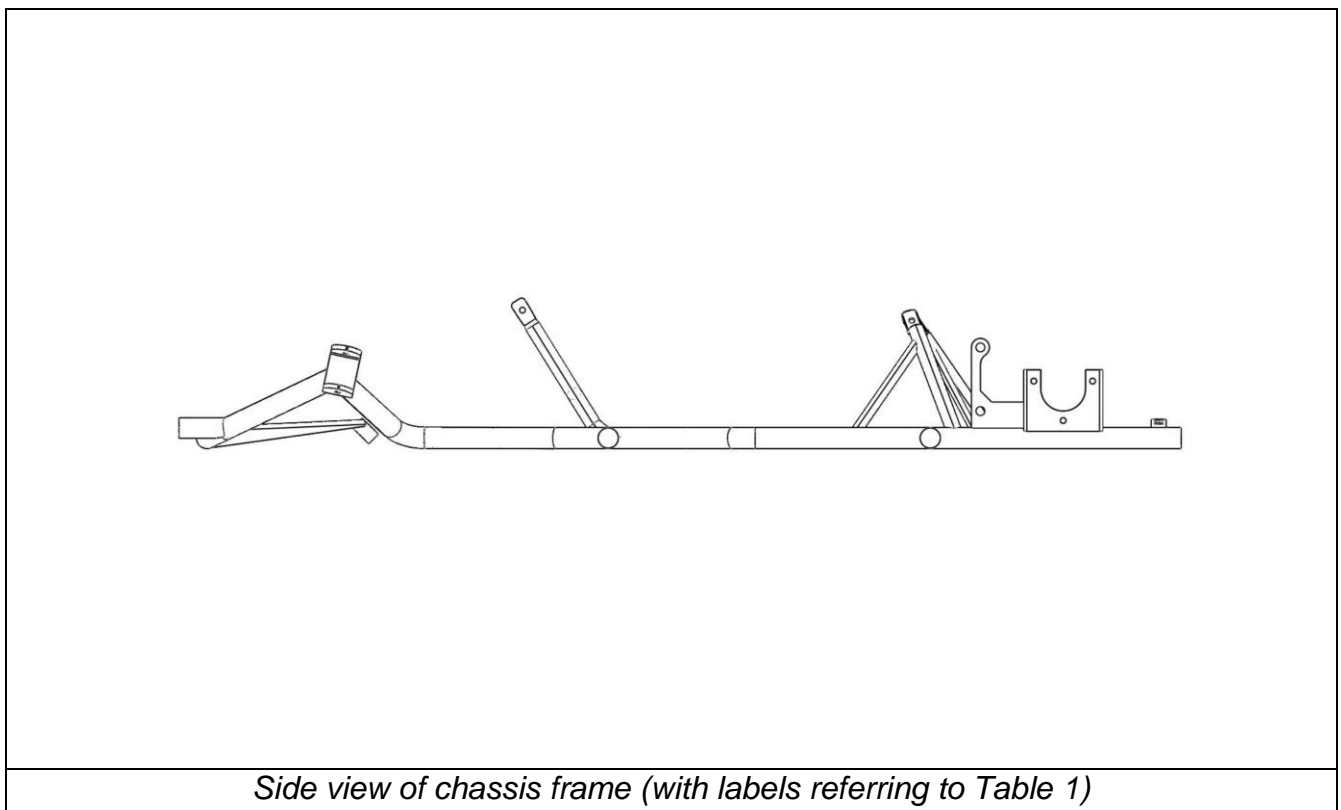
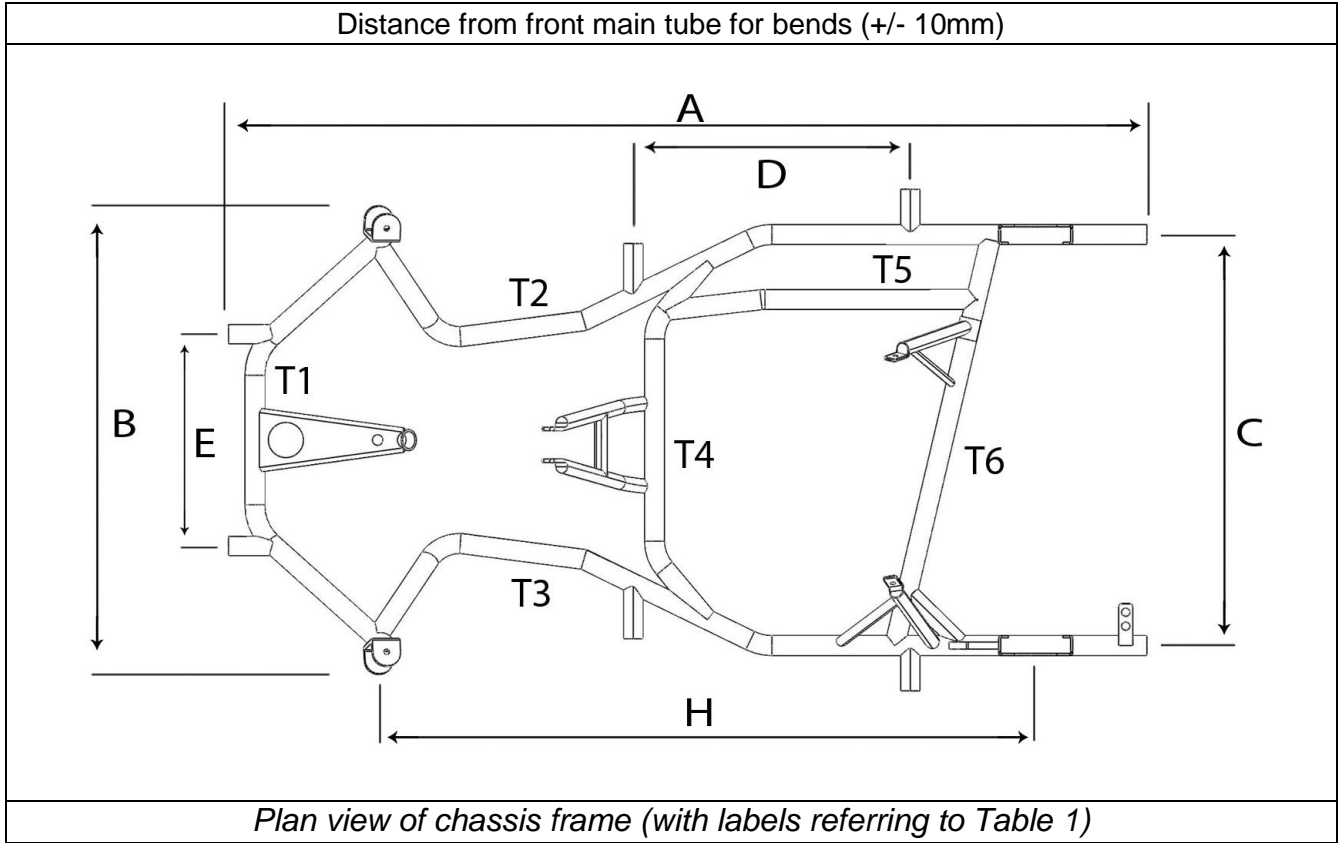


TABLE 1 – DIMENSIONS OF FRAME

		<i>Measurement</i>	<i>Tolerance / Remarks</i>
A:	Total length (w/out front bumper)	1310 mm	+/- 10 mm
B:	Outer front width	650 mm	+/- 10 mm
C:	Rear width *	581 mm	+/- 5 mm (600 ± 25mm mandatory)
D:	Distance between side bumper mounting points *	380 mm	+/- 5 mm
E:	Distance between front bumper lower mountings *	300 mm	+/- 5 mm
F:	Distance between front bumper upper mountings	515 mm	+/- 5 mm (outer)
G:	Number of bends	11	-
H:	Wheelbase	900 mm	+/- 5 mm
I:	Number of tubes	6	($\varnothing > 21\text{mm}$; length > 150mm)
J:	Diameter	28 mm	+/- 0.5 mm
K:	Wall thickness	2.0 mm	+/- 0.1 mm
L:	Material	Magnetic Steel	mandatory
M:	Number of bearings	2	mandatory

* Distance between centres of tubes

TABLE 2 – ADDITIONAL INFORMATION

		<i>Measurement</i>	<i>Tolerance</i>
A:	Inner waist width	250 mm	+/- 10 mm
B:	Inside edge of front tube to centreline of rear axle	1102 mm	+/- 10 mm
C:	Rear edge of rear cross rail mounting point to centreline of axle – engine side	36 mm	+/- 10 mm
D:	Rear edge of rear cross rail mounting point to centreline of axle – opposite side	196 mm	+/- 10 mm

COMPLIMENTARY INFORMATION

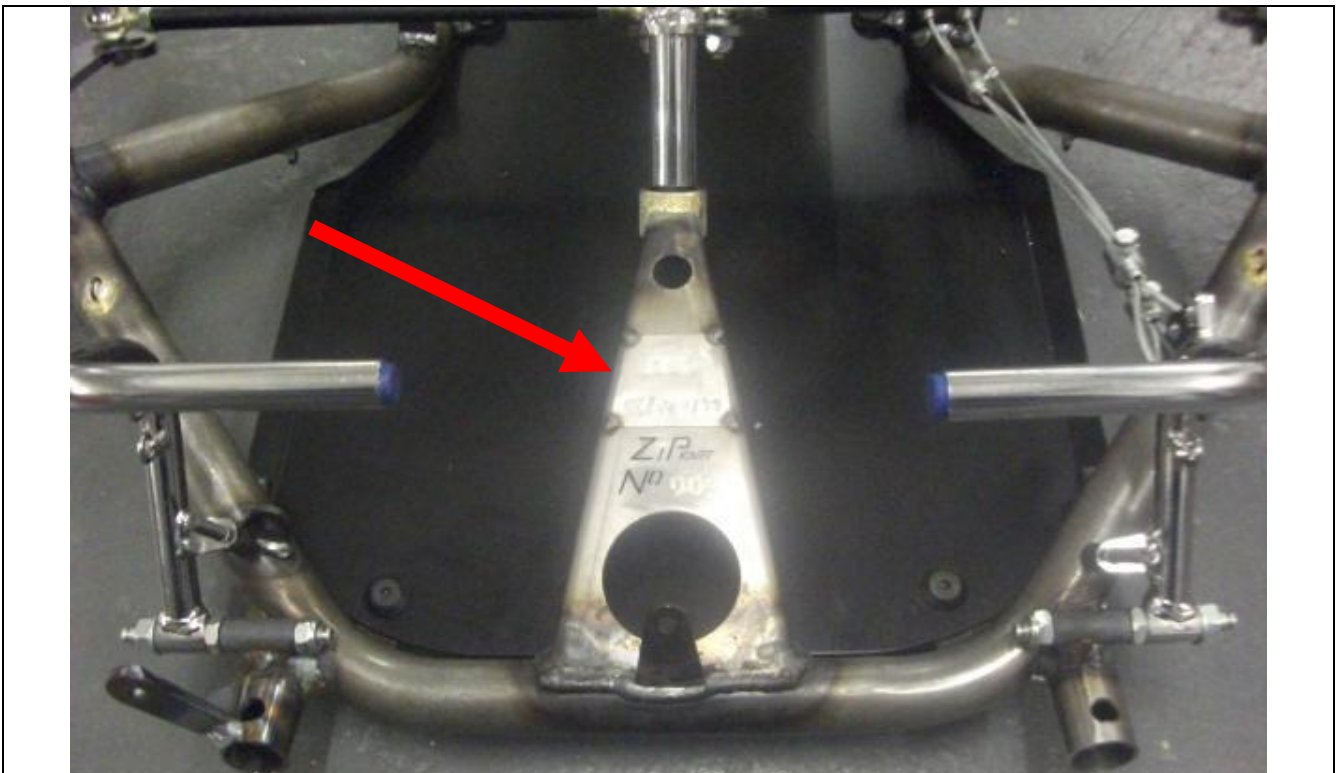
Note: Imperial equivalent tube used.

Hydraulic brake variant with additional Master Cylinder bracket and no Caliper bracket permitted.

DETAILS OF IDENTITY PLATE



Photograph of I.D. plate



Photograph / drawing of position of I.D. plate

Extension No.: 1

EXTENSION TO CHASSIS HOMOLOGATION

<i>Manufacturer</i>	Zip Kart
<i>Make</i>	Zip Kart
<i>Model</i>	Lightning
<i>Category</i>	Formula Cadet
<i>Valid from</i>	1 st January 2011
<i>Number of pages</i>	1

- ERRATUM -

Note:

Left-hand side engine rail exact 'mirror image' version of this chassis is also permitted for use in the Honda Cadet class.

SIGNATURE AND STAMP OF THE MSA



Date: **1st September 2011**

Signed by: **John Ryan**

Position: **MSA Technical Executive**