

REGISTRATION OF CHASSIS & BRAKE

<i>Category</i>	BAMBINO
<i>Valid From</i>	17 th June 2011
<i>Number of Pages</i>	7

This Homologation Form reproduces descriptions, illustrations and dimensions of the chassis at the moment of the MSA homologation. The Manufacturer may modify them, but only within the limits set by the MSA regulations in force and with the written agreement of the MSA.

SIGNATURE AND STAMP OF THE MSA



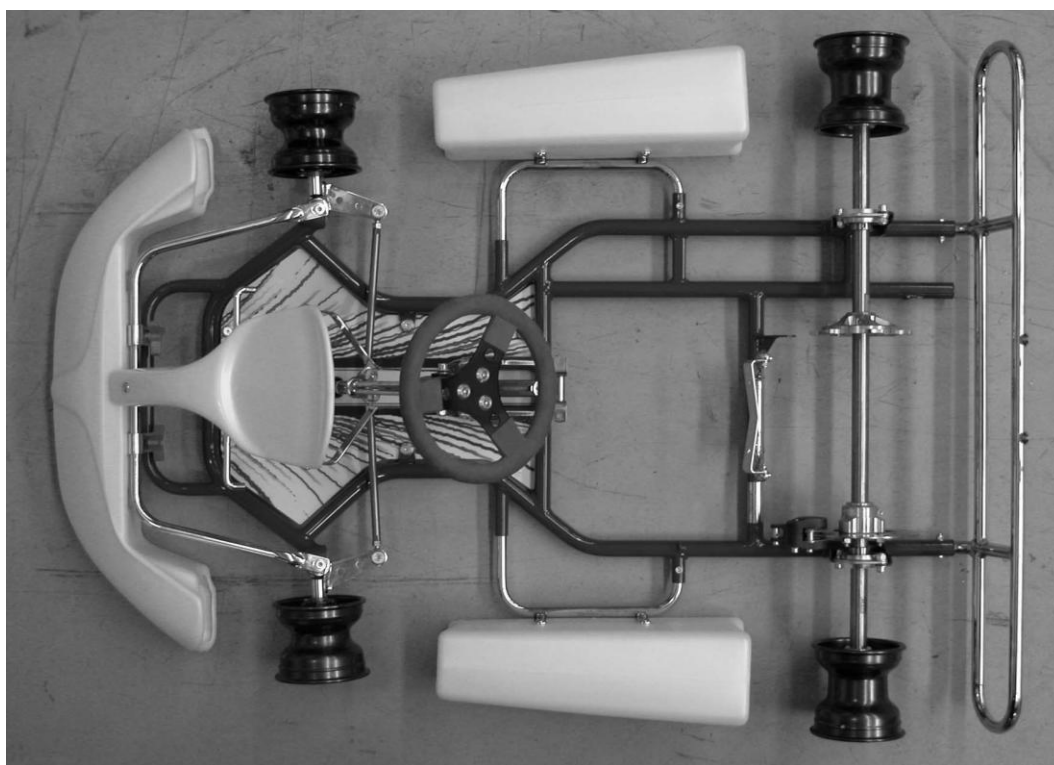
Date: **17th June 2011**

Signed by: **John Ryan**

Position: **MSA Technical Executive**

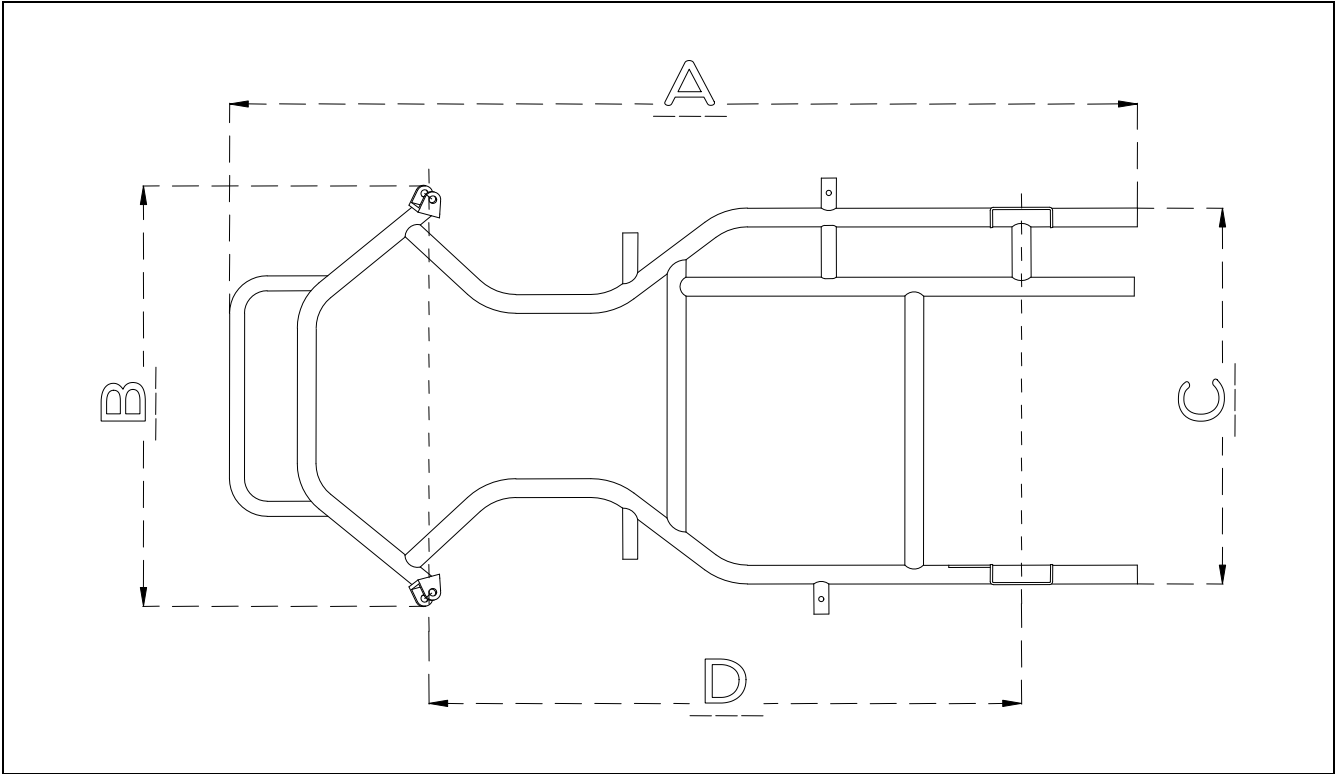
CHASSIS

<i>Manufacturer</i>	OTK Kart Group s.r.l.
<i>Make</i>	OTK
<i>Model</i>	Tony Kart, Kosmic, FA, Exprit

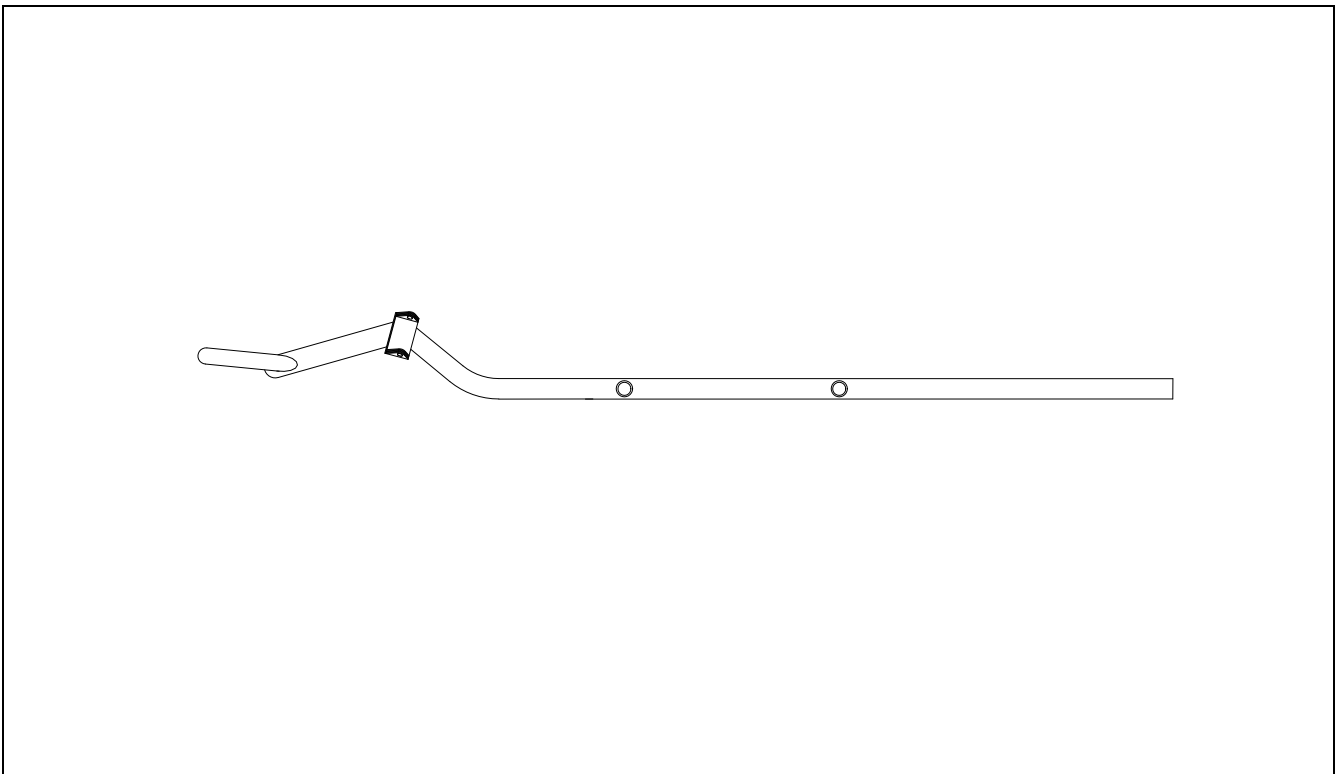


Photograph of complete kart less seat & tyres

TECHNICAL DRAWINGS OF FRAME



Plan view of chassis frame

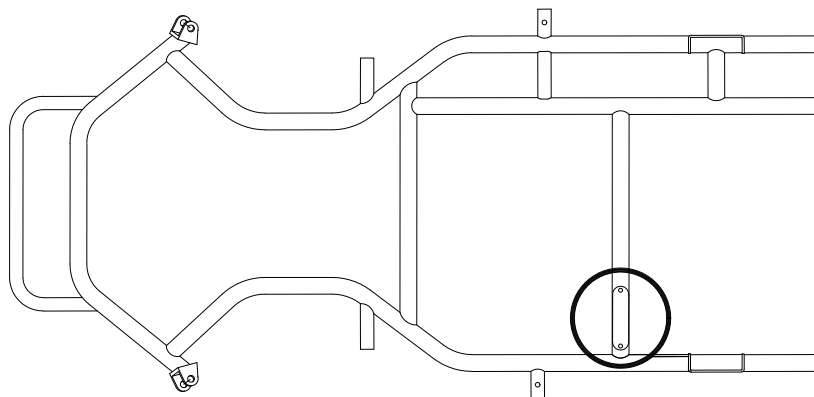


Side view of chassis frame

DETAILS OF IDENTITY PLATE



Photograph of I.D. plate



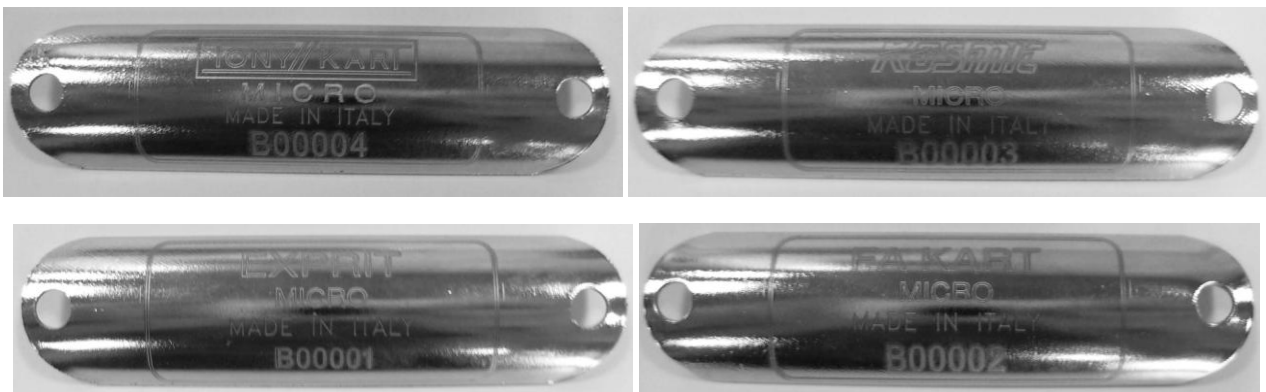
Drawing of position of I.D. plate

DIMENSIONS OF FRAME

		<i>Measurement</i>	<i>Tolerance</i>
A:	Total Length	1206 mm	+/- 10mm
B:	Width at Front Axle	554 mm	+/- 10mm
C:	Width at Rear Axle	500 mm	+/- 10mm
D:	Wheelbase	790 mm	+/- 10mm
E:	Number of Bends	8	-
F:	Number of Tubes with Ø over 21mm	6	(max. 6)
G:	Tube Diameter	25 mm	+/- 0.3mm
H:	Tube Wall Thickness	2 mm	+/- 0.2mm
I:	Tube Material	Steel	mandatory
J:	Number of Bearings	2	mandatory
K:	Outside Ø of Axle	25 mm	+/- 0.2mm
L:	Axle Wall Thickness	Solid	+/- 0.2mm

COMPLIMENTARY INFORMATION

These plates are on Tony Kart, Kosmic, FA Kart and Exprit chassis' sold before May 2011:



BRAKE SYSTEM

<i>Manufacturer</i>	OTK Kart Group s.r.l.
<i>Make</i>	OTK
<i>Model</i>	MICRO



Photograph of complete brake system

TECHNICAL DETAILS

		<i>Measurement</i>	<i>Tolerance</i>
A:	Actuation	Mechanical	-
B:	Number of Calipers	1	-
C:	Caliper Material	Aluminium	-
D:	Number of Pads	2	<i>per Caliper</i>
E:	Thickness of Disc	3 mm	+/- 1mm
F:	External Ø of Disc	170 mm	+/- 1.5mm
G:	Internal Ø of Disc	110 mm	+/- 1.5mm
H:	Drilled Disc?	No	-
I:	Grooved Disc?	No	-
J:	Number of Mounting Lugs	3	-
K:	Dual Linkage?	Yes	mandatory



Photograph of brake caliper



Photograph of brake disc

COMPLIMENTARY INFORMATION

Insert any additional information that may be required here

ALTERNATIVE BRAKE SYSTEM

<i>Manufacturer</i>	OTK KART GROUP s.r.l.
<i>Make</i>	OTK
<i>Model</i>	MICRO



Photograph of complete brake system

TECHNICAL DETAILS

		<i>Measurement</i>	<i>Tolerance</i>
A:	Actuation	Mechanical	-
B:	Number of Calipers	1	-
C:	Caliper Material	AL	-
D:	Number of Pads	2	<i>per Caliper</i>
E:	Thickness of Disc	3,5 mm	+/- 1mm
F:	External Ø of Disc	170 mm	+/- 1.5mm
G:	Internal Ø of Disc	110 mm (max.)	+/- 1.5mm
H:	Drilled Disc?	No	-
I:	Grooved Disc?	No	-
J:	Number of Mounting Lugs	3	-
K:	Dual Linkage?	Yes	mandatory

Extension: 01

03/B(C)/11

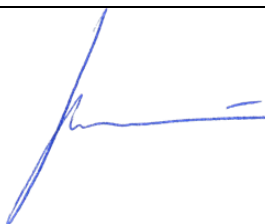


Photograph of brake caliper



Photograph of brake disc

SIGNATURE AND STAMP OF THE MSA

 MSA

Date: **28 January 2014**

Signed by: **Joe Hickerton**

Position: **MSA Technical Administrator**

Extension: 02



Homologation N°

03/B(C)/11

CHASSIS

<i>Manufacturer</i>	OTK Kart Group s.r.l.
<i>Make</i>	OTK
<i>Model</i>	Tony Kart, Kosmic, FA, Exprit

An alternative hollow rear axle is also permitted, details as follows:

K:	Outside Ø of Axle	25 mm	+/- 0.2mm
L:	Axle Wall Thickness	3 mm	+/- 0.2mm

SIGNATURE AND STAMP OF THE MSA

A blue ink signature is written over a grey MSA logo stamp. The signature is a stylized, cursive name. The stamp consists of the letters 'MSA' in a bold, sans-serif font, with a red arrow-like graphic pointing upwards and to the right from the top right of the 'A'.	Date: 01 April 2014
	Signed by: Joe Hickerton
	Position: MSA Technical Administrator

Extension: 03



Homologation N°

03/B(C)/11

CHASSIS

<i>Manufacturer</i>	OTK Kart Group s.r.l.
<i>Make</i>	OTK
<i>Model</i>	Tony Kart, Kosmic, FA, Exprit

An alternative hollow rear axle is also permitted, details as follows:

K:	Outside Ø of Axle	25 mm	+/- 0.2mm
L:	Axle Wall Thickness	5 mm	+/- 0.2mm

SIGNATURE AND STAMP OF THE MSA

A handwritten signature in blue ink is written over a grey MSA logo stamp. The signature is a stylized, cursive name.	Date: 08 May 2017
	Signed by: Joe Hickerton
	Position: MSA Technical Manager