


REGISTRATION OF CHASSIS & BRAKE

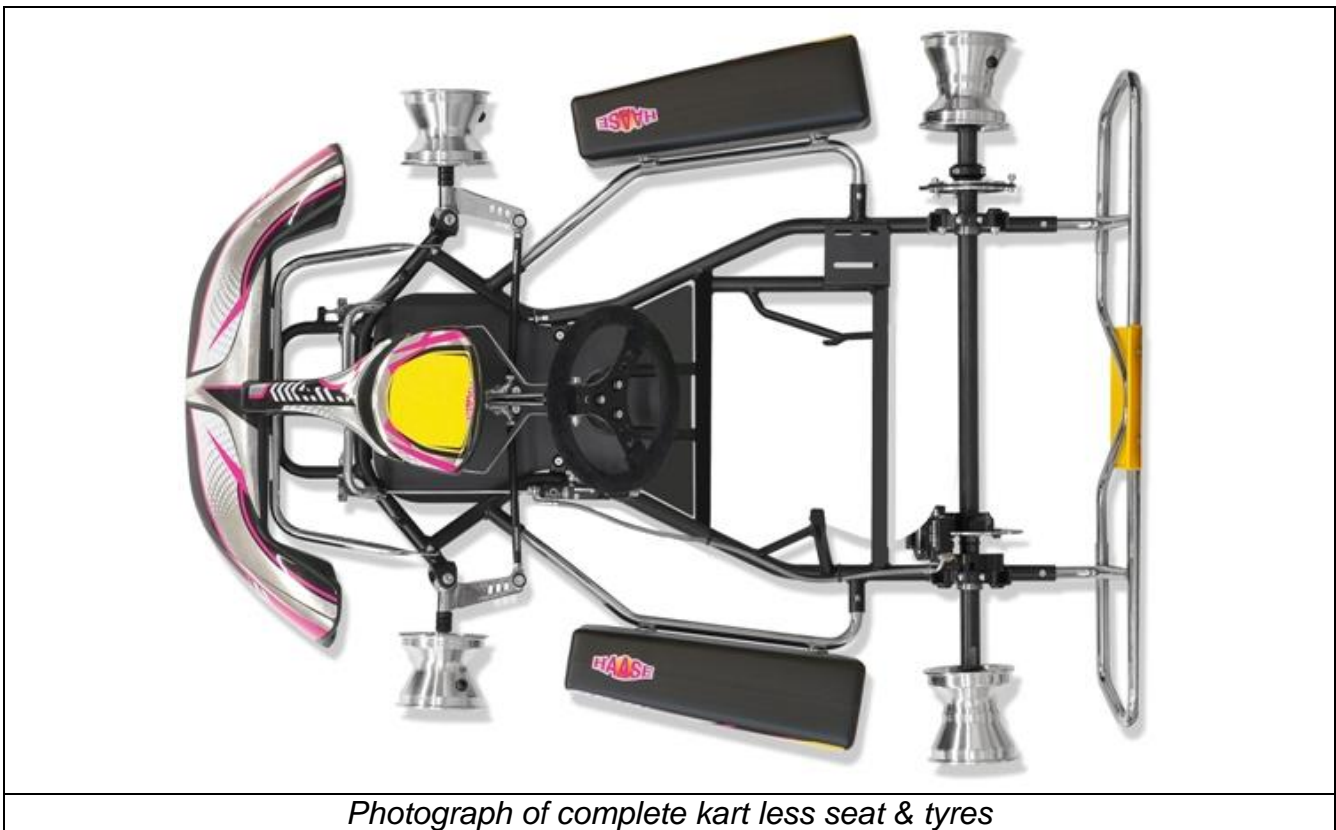
<i>Category</i>	BAMBINO
<i>Valid From</i>	02 December 2014
<i>Number of Pages</i>	7

This Homologation Form reproduces descriptions, illustrations and dimensions of the chassis at the moment of the MSA homologation. The Manufacturer may modify them, but only within the limits set by the MSA regulations in force and with the written agreement of the MSA.

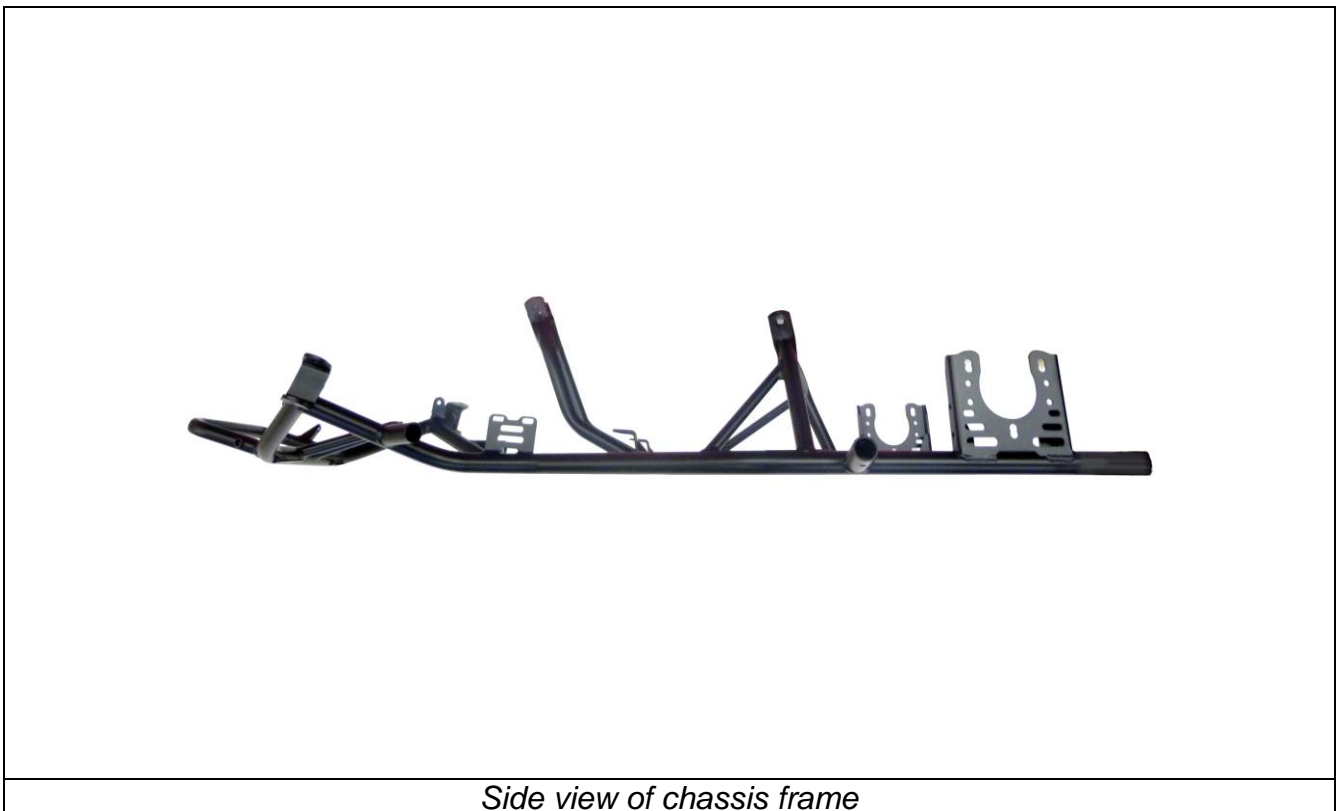
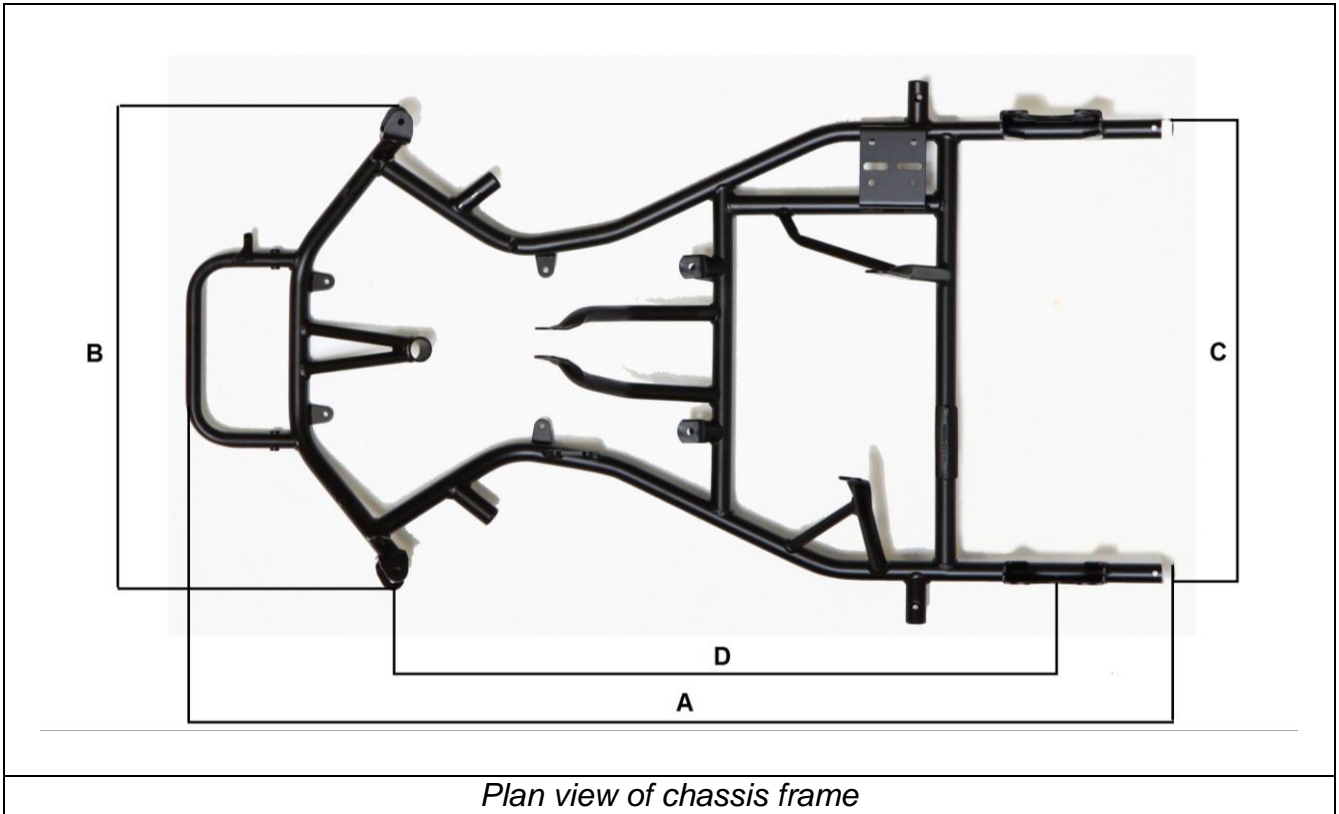
SIGNATURE AND STAMP OF THE MSA	
	Date: 20 February 2015 Signed by: Joe Hickerton Position: MSA Technical Administrator

CHASSIS

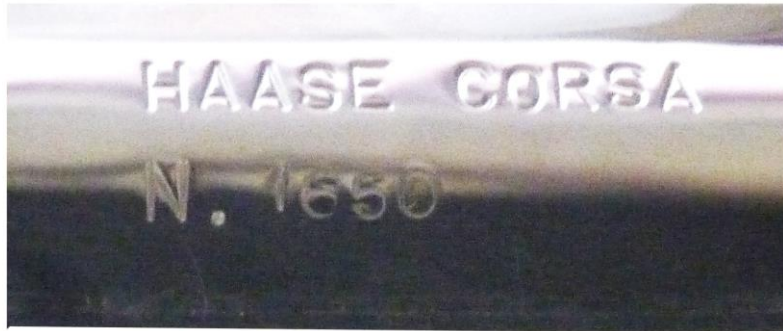
<i>Manufacturer</i>	HAASE SRL
<i>Make</i>	HAASE – CORSA RACING KART
<i>Model</i>	MINOX - NINJIA



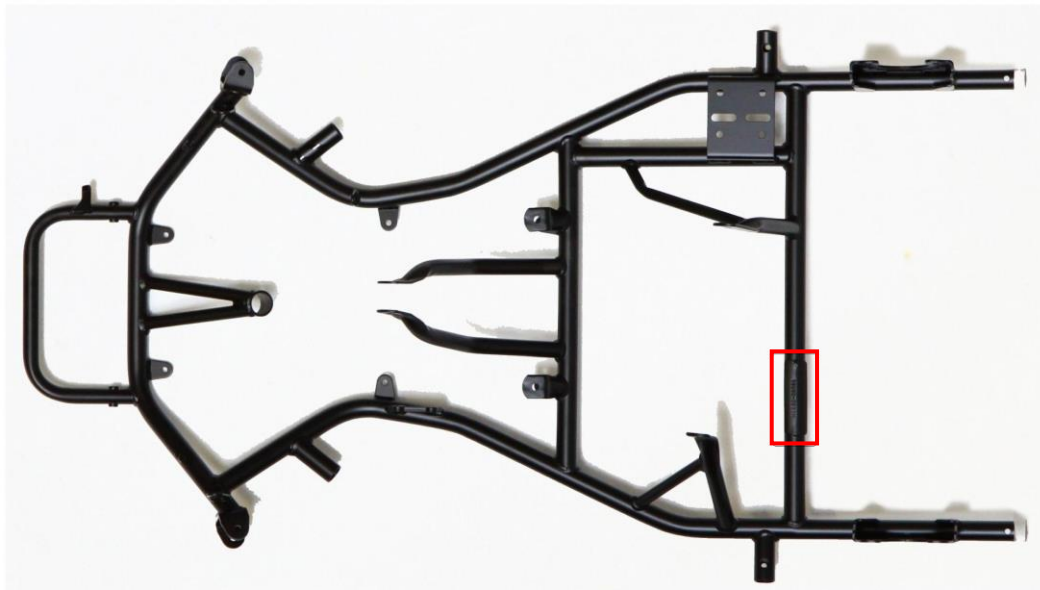
TECHNICAL DRAWINGS OF FRAME



DETAILS OF IDENTITY PLATE



Photograph of I.D. plate



Photograph / drawing of position of I.D. plate

DIMENSIONS OF FRAME

		<i>Measurement</i>	<i>Tolerance</i>
A:	Total Length	1080 mm	+/- 10mm
B:	Width at Front Axle	596 mm	+/- 10mm
C:	Width at Rear Axle	560 mm	+/- 10mm
D:	Wheelbase	800 mm	+/- 10mm
E:	Number of Bends	8	-
F:	Number of Tubes with Ø over 21mm	6	(max. 6)
G:	Tube Diameter	25 mm	+/- 0.3mm
H:	Tube Wall Thickness	2 mm	+/- 0.2mm
I:	Tube Material	Steel	mandatory
J:	Number of Bearings	2	mandatory
K:	Outside Ø of Axle	30 mm	+/- 0.2mm
L:	Axle Wall Thickness	5 mm	+/- 0.2mm

COMPLIMENTARY INFORMATION

Axles also available:

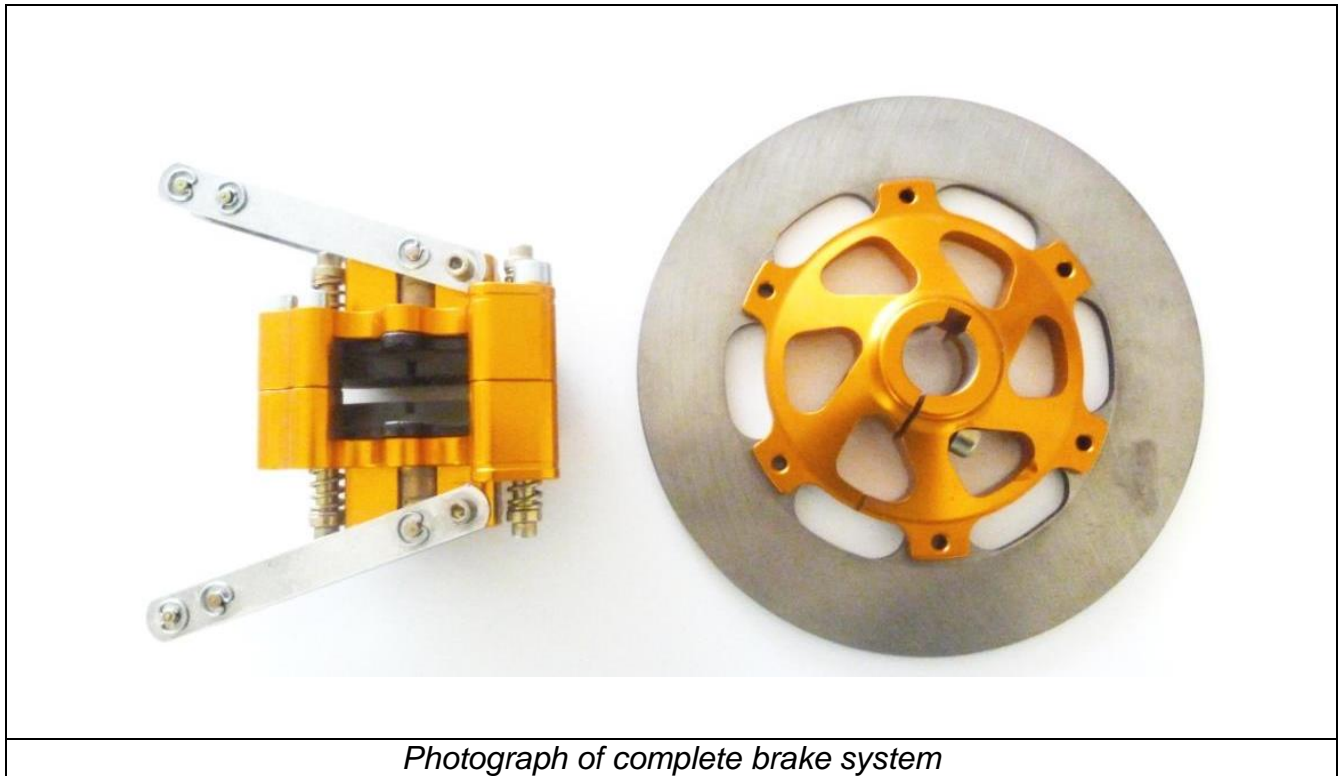
K:	Outside Ø of Axle	30mm	+/- 0.2mm
L:	Axle Wall Thickness	2mm	+/- 0.2mm
K:	Outside Ø of Axle	25mm	+/- 0.2mm
L:	Axle Wall Thickness	3mm	+/- 0.2mm
K:	Outside Ø of Axle	25mm	+/- 0.2mm
L:	Axle Wall Thickness	Solid	+/- 0.2mm

Alternative front side bar mounting sockets:



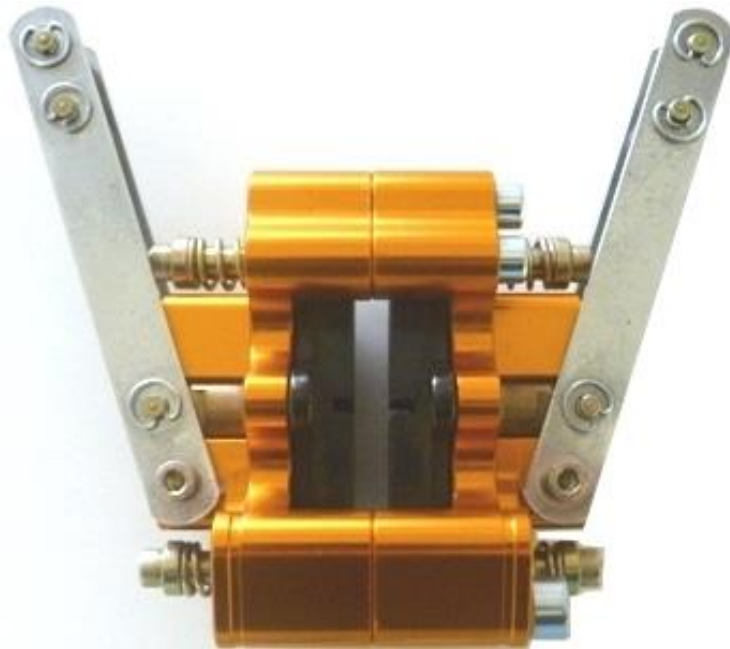
BRAKE SYSTEM

<i>Manufacturer</i>	HAASE SRL
<i>Make</i>	RUNNER
<i>Model</i>	Mechanical FR08



TECHNICAL DETAILS

		<i>Measurement</i>	<i>Tolerance</i>
A:	Actuation	Mechanical	-
B:	Number of Calipers	1	-
C:	Caliper Material	Aluminium	-
D:	Number of Pads	2	<i>per Caliper</i>
E:	Thickness of Disc	4,9 mm	+/- 1mm
F:	External Ø of Disc	202 mm	+/- 1.5mm
G:	Internal Ø of Disc	139 mm	+/- 1.5mm
H:	Drilled Disc?	No	-
I:	Grooved Disc?	No	-
J:	Number of Mounting Lugs	6	-
K:	Dual Linkage?	Yes	-



Photograph of brake caliper



Photograph of brake disc

COMPLIMENTARY INFORMATION

Insert any additional information that may be required here