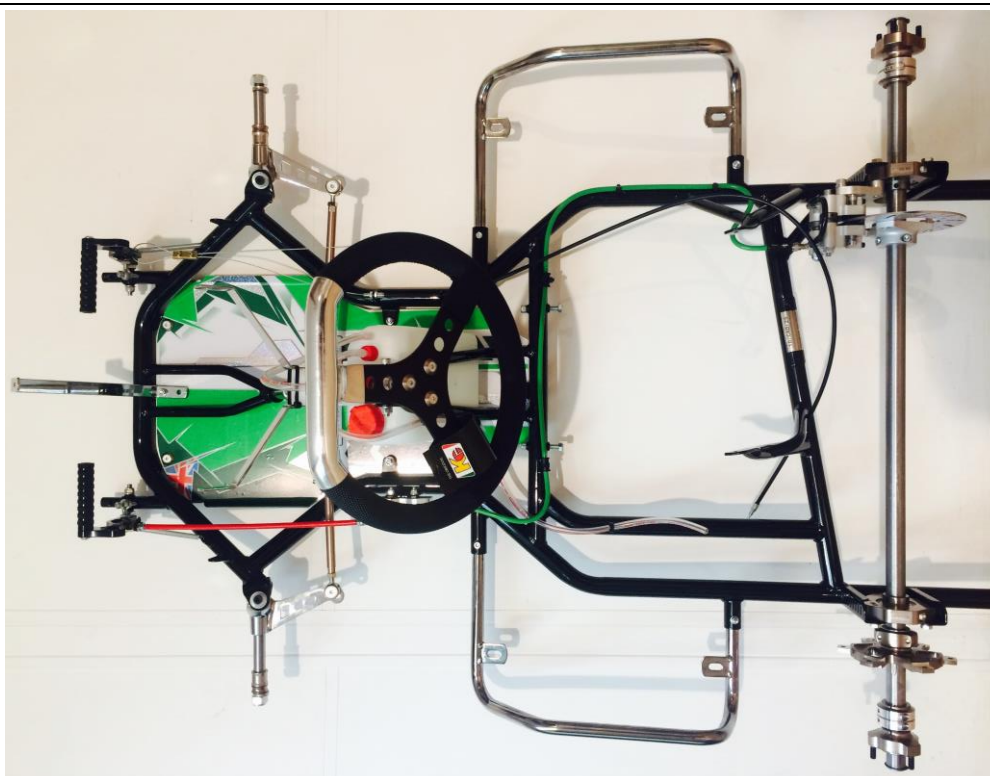


## HOMOLOGATION OF CHASSIS

<i>Manufacturer</i>	BRK
<i>Make</i>	British Racing Karts
<i>Model</i>	Atomic
<i>Category</i>	Formula Cadet
<i>Valid from</i>	01 January 2017
<i>Valid until</i>	31 December 2025
<i>Number of pages</i>	4

*This Homologation Form reproduces descriptions, illustrations and dimensions of the chassis at the moment of the MSA homologation. The Manufacturer may modify them, but only within the limits set by the MSA regulations in force and with the written agreement of the MSA.*



*Photograph of complete chassis less seat and bumpers*

### SIGNATURE AND STAMP OF THE MSA

/

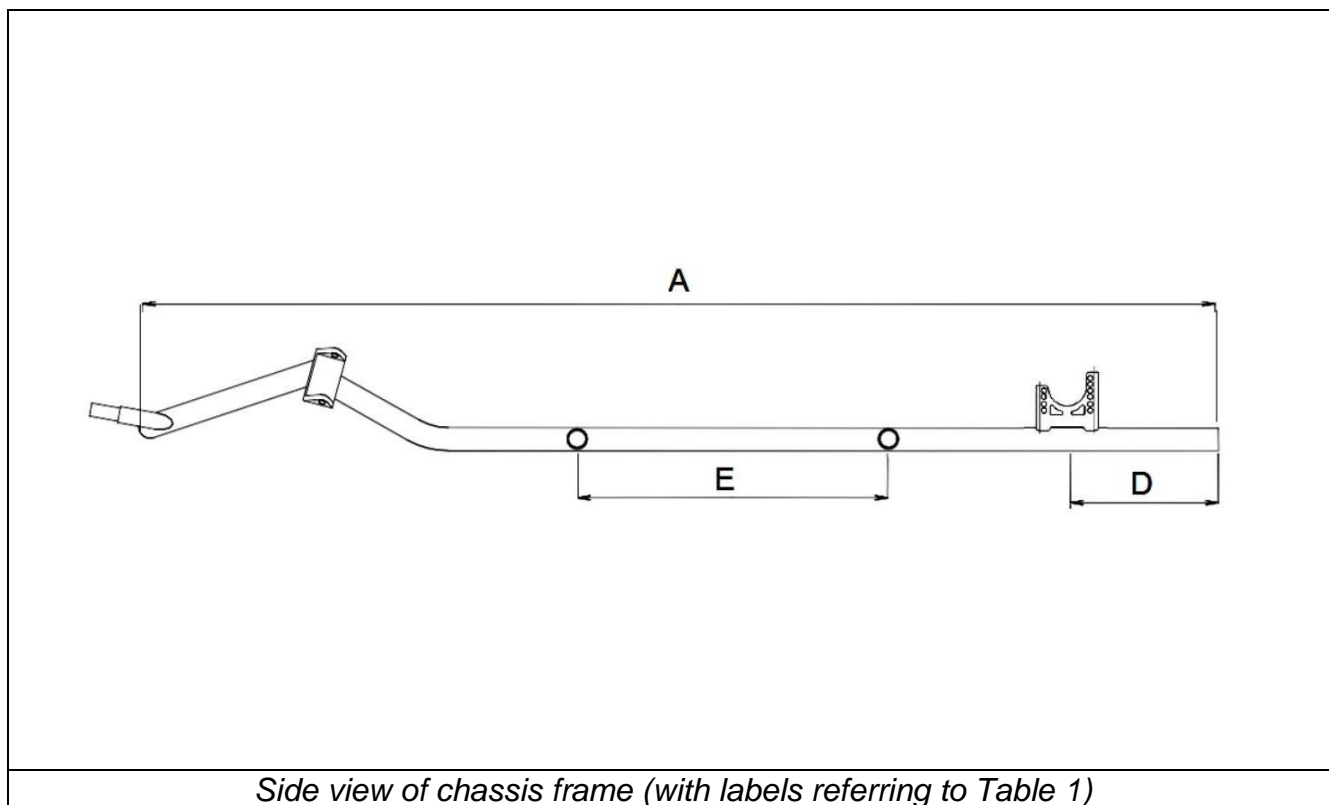
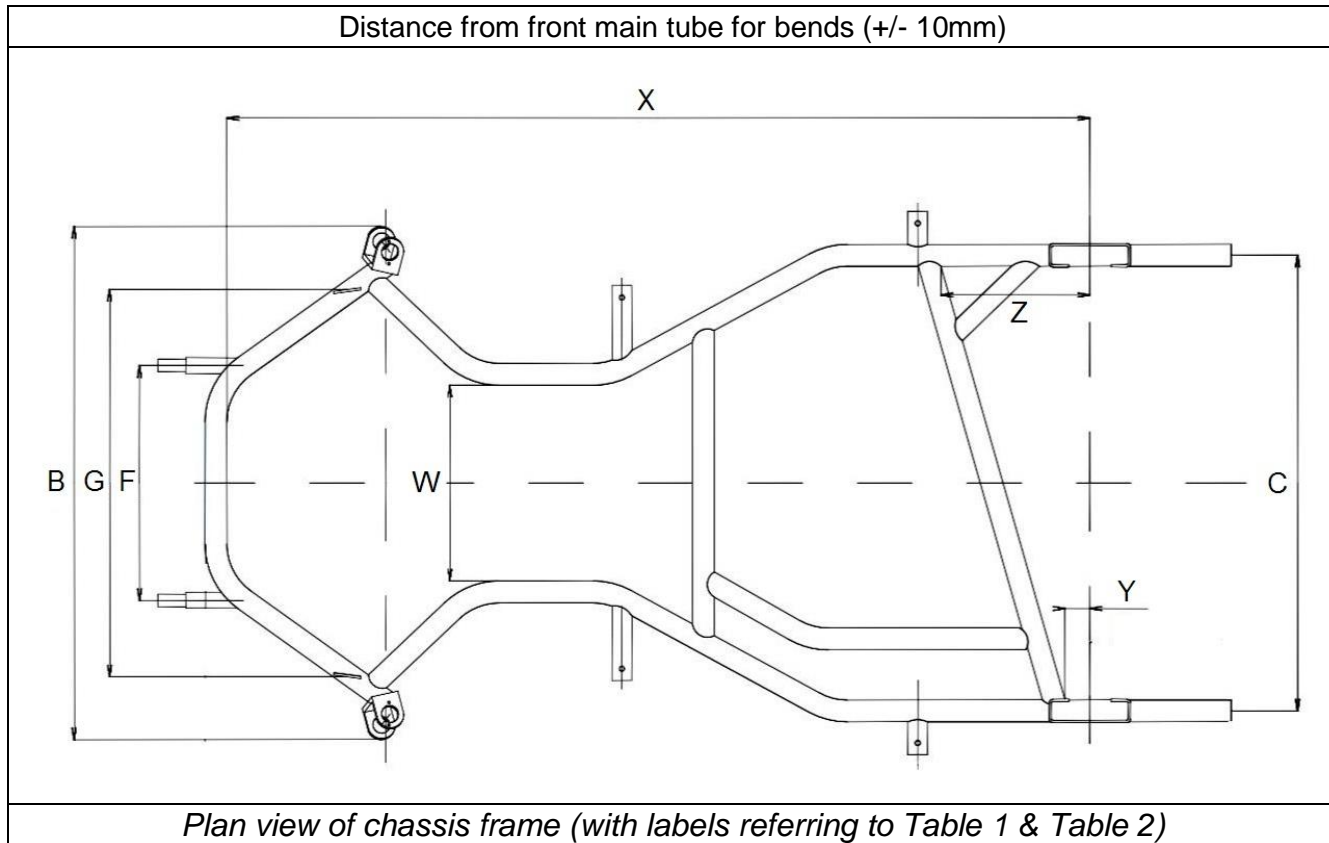
MSA

Date: **15 December 2016**

Signed by: **Joe Hickerton**

Position: **Technical Manager**

**TECHNICAL DRAWINGS OF FRAME WITH MAIN DIMENSIONS**



**TABLE 1 – DIMENSIONS OF FRAME**

		<i>Measurement</i>	<i>Tolerance / Remark</i>
<b>A:</b>	Total length (w/out front bumper)	<b>1310 mm</b>	± 10 mm
<b>B:</b>	Outer front width	<b>653 mm</b>	± 10 mm
<b>C:</b>	Rear width *	<b>585 mm</b>	± 5 mm (within limits of 600 ± 25mm)
<b>D:</b>	Rear overhang	<b>177 mm</b>	± 15 mm
<b>E:</b>	Distance between side bumper mounting points *	<b>380 mm</b>	± 5 mm
<b>F:</b>	Distance between front bumper lower mountings *	<b>350 mm</b>	± 5 mm
<b>G:</b>	Distance between front bumper upper mountings	<b>495 mm</b>	± 5 mm (outer)
<b>H:</b>	Number of bends	<b>9</b>	in main tubes
<b>I:</b>	Wheelbase	<b>900 mm</b>	± 5 mm
<b>J:</b>	Number of main tubes	<b>6</b>	with $\varnothing > 21\text{mm}$ (not incl. bumper mountings and seat stays)
<b>K:</b>	Diameter	<b>28 mm</b>	± 0.7 mm
<b>L:</b>	Wall thickness	<b>2.0 mm</b>	± 0.2 mm
<b>M:</b>	Material	<b>Magnetic Steel</b>	mandatory
<b>N:</b>	Number of bearings	<b>2</b>	mandatory
<b>O:</b>	Seat Attachment	<b>Welded</b>	welded or removable?

\* Distance between centres of tubes

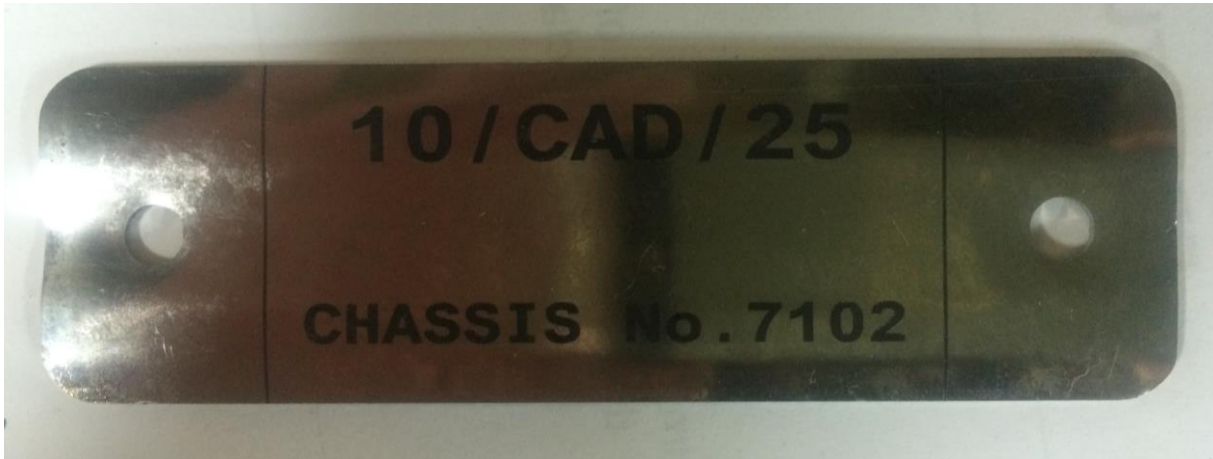
**TABLE 2 – ADDITIONAL INFORMATION**

		<i>Measurement</i>	<i>Tolerance</i>
<b>W:</b>	Inner waist width	<b>255 mm</b>	± 10 mm
<b>X:</b>	Inside edge of front tube to centreline of rear axle	<b>1105 mm</b>	± 10 mm
<b>Y:</b>	Rear edge of rear cross rail mounting point to centreline of axle – engine side	<b>45 mm</b>	± 10 mm
<b>Z:</b>	Rear edge of rear cross rail mounting point to centreline of axle – opposite side	<b>140 mm</b>	± 10 mm

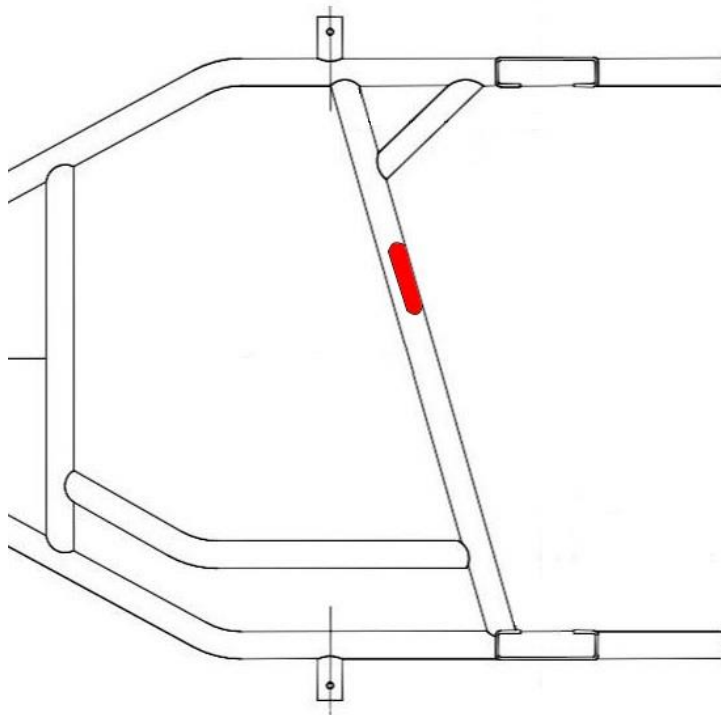
**COMPLIMENTARY INFORMATION**

**Exact mirror image right hand engine variant permitted.**

## DETAILS OF IDENTITY PLATE



*Photograph / drawing of I.D. plate*



*Photograph / drawing of position of I.D. plate*