

## REGULATION CHANGES FOR CONSULTATION

Committee:	Kart Committee
Date of meeting:	24 <sup>th</sup> June 2014
Closing date for consultation:	10 <sup>th</sup> October 2014
Email for comments:	<a href="mailto:KartConsultation@msauk.org">KartConsultation@msauk.org</a>

### Section U

#### Existing Regulation

**13.3.3.** For Short Circuits, leather, or suits bearing the CIK homologation label (as per 13.4), are acceptable.

**13.3.7.** It is recommended that heavy duty PVC suits are only worn in conjunction with other approved suits for wet weather protection.

**13.4.1.** Examples of the only acceptable CIK homologation labels are shown in Appendix 1, Drawing 11.

**13.4.1.** (2015 text) Examples of the only acceptable CIK homologation labels are shown in Appendix 1, Drawing 11. From 01.01.2016: The only acceptable CIK homologated suits are those to standard No. 2001-1 or No. 2013-1, level 1 or 2.

**13.4.2.** Suits homologated by the CIK prior to 1st January 1997 are not acceptable.

#### Proposed Regulation

**(U)13.3.3.** For Short Circuits, **only** leather suits, or suits bearing the CIK homologation label **of a recognised CIK homologation standard** (as per 13.4.1.), are acceptable.

**(U)13.3.7.** It is recommended that heavy duty PVC suits are only worn in conjunction with other approved suits for wet weather protection. **Correctly fitted wet suits, specifically designed for this purpose, may be worn over an approved kart suit.**

**(U)13.4.1.** Examples of the only acceptable CIK homologation labels are shown in Appendix 1, Drawing 11. **From 01.01.2016: The only acceptable CIK homologated suits are those to standard No. 2001-1 or No. 2013-1, level 1 or 2.**

**Reason:** Clarification of 13.3.3. Clarification regarding use of wets suits and advice about intended future removal of older CIK standards (below).

**Implementation: 01 January 2015**

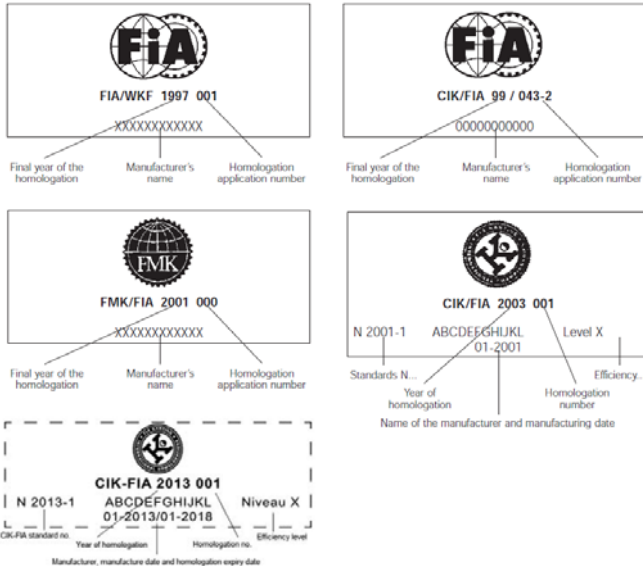
**(U)13.4.1.** ~~Examples of the only acceptable CIK homologation labels are shown in Appendix 1, Drawing 11. From 01.01.2016:~~ The only acceptable CIK homologated suits are those to standard No. 2001-1 or No. 2013-1, level 1 or 2. **Examples of the CIK homologation labels are shown in Appendix 1, Drawing 11.**

**(U)13.4.2.** ~~Suits homologated by the CIK prior to 1st January 1997 are not acceptable.~~

Continued over...

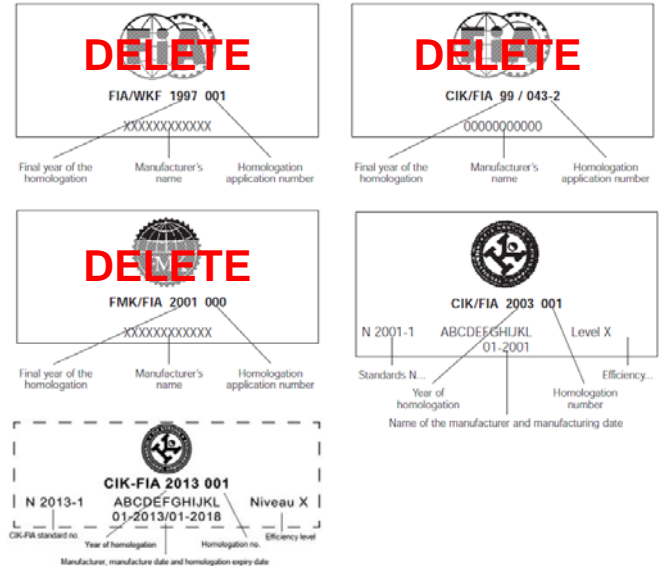
**Appendix 1: Drawings. Drawing number 11**

Only suits bearing one of the below labels are acceptable as CIK homologated.



**Appendix 1: Drawings. Drawing number 11**

Only suits bearing one of the below labels are acceptable as CIK homologated.



**Reason:** Removal of older, outdated overall standards.

**Implementation:** 01 January 2016