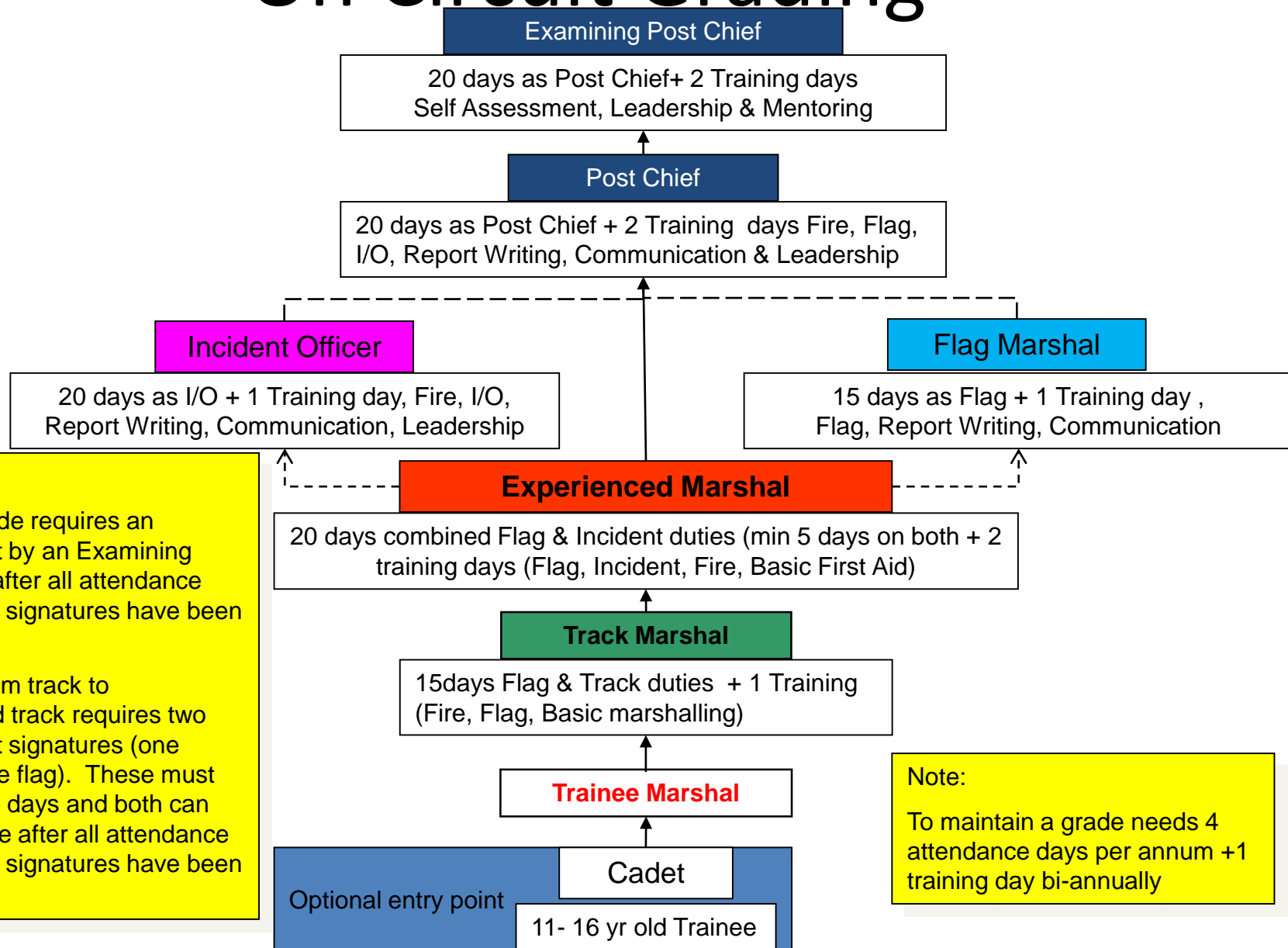


Upgrading to Examining Post Chief requires club nomination & MSA approval

On Circuit Grading



Note:
Each upgrade requires an assessment by an Examining Post Chief after all attendance and training signatures have been obtained.

Upgrade from track to experienced track requires two assessment signatures (one incident, one flag). These must be separate days and both can only be done after all attendance and training signatures have been obtained

Note:
To maintain a grade needs 4 attendance days per annum +1 training day bi-annually