

The Pathways in this document are effective from 1<sup>st</sup> January 2023.

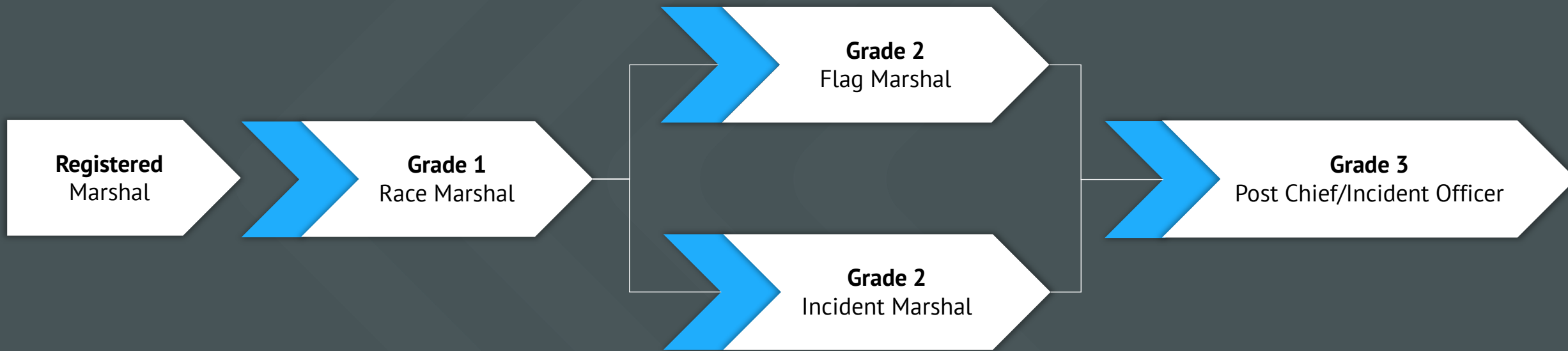
Once you have completed the online training course and registered with Motorsport UK, you can volunteer at any type of event. However, there are defined pathways available in the Race, Off Track, Speed, Kart and Rally disciplines which allow you to develop and learn additional skills as you progress on your journey through the sport.


Please click on the links to explore the different pathways.

[RACE](#)[RACE OFF TRACK](#)[SPEED](#)[KART](#)[RALLY](#)



OVERVIEW – RACE PATHWAY



 **Grade maintenance:** 2 days marshalling per year + 1 training event every 2 years



## ATTENDANCE

- **15** days marshalling across a minimum of **12 months**
  - Minimum 5 days in **Incident** role
  - Minimum 5 days in **Flag** role

## ASSESSMENTS

- **1** practical assessment in an **Incident** role
- **1** practical assessment in a **Flag** role

(Note: Assessments must be carried out on separate days)

## TRAINING

Completion of the following Race modules:

- **RC01A** – Introduction to Race
- **RC01B** – Communication in Theory
- **RC01C** – Basic Flag

Plus the following Generic modules:

- **GE01A** – Fire Theory
- **GE01B** – Fire Practical
- **GE01C** – Electric Vehicle Awareness
- **GE01D** – Working Together
- **GE01E** – Upgrades and Assessments
- **GE01F** – Safe, Fair, Fun
- **GE01G** – First On Scene

## ATTENDANCE

- **20** days marshalling across a minimum of **24 months**
  - 5 days must be as a **Flag** Marshal

## ASSESSMENTS

- **1** practical assessment as an Incident Marshal
- **1** knowledge check on flag procedures

(Note: Both the Flag and Incident grades may be undertaken simultaneously; in which case, both assessments must be practical)

## TRAINING

Completion of the following Race modules:

- **RC02A** – Incident Response
- **RC02B** – Communication in Practice

Plus the following Generic modules:

- **GE02A** – Supporting Your Peers

## ATTENDANCE

- **20** days marshalling across a minimum of **24 months**
  - 5 days must be as an **Incident** Marshal

## ASSESSMENTS

- **1** practical assessment as a Flag Marshal
- **1** knowledge check on incident procedures

(Note: Both the Flag and Incident grades may be undertaken simultaneously; in which case, both assessments must be practical)

## TRAINING

Completion of the following Race modules:

- **RC02A** – Incident Response
- **RC02B** – Communication in Practice
- **RC02C** – Advanced Flag

Plus the following Generic modules:

- **GE02A** – Supporting Your Peers

## ATTENDANCE

- **25** days marshalling across a minimum of **36 months**
  - All days must be as a **Post Chief** or **Incident Officer**

## ASSESSMENTS

- **1** practical assessment in Post Chief role

## TRAINING

Completion of the following Race modules:

- **RC03A** – Incident and Safety Management
- **RC03B** – Event Organisation and Structure


Plus the following Generic modules:

- **GE03A** – Leadership
- **GE03B** – Developing Others
- **GE03C** – Giving and Receiving Feedback
- **GE03D** – Report Writing



OVERVIEW – RACE OFF TRACK PATHWAY



 **Grade maintenance:** 2 days marshalling per year + 1 training event every 2 years



## ATTENDANCE

- **15** days marshalling across a minimum of **12 months**
  - **5 days** must be in **Pit Lane/Start Line**
  - **5 days** must be in **Paddock/Assembly**

## ASSESSMENTS

- **1** practical assessment in **Pit Lane/Start Line** role
- **1** practical assessment in **Paddock/Assembly** role

(Note: Assessments must be carried out on separate days)

## TRAINING

Completion of the following Off Track modules:

- **OT01A** – Introduction to Off Track
- **OT01B** – Communication in Theory\*
- **OT01C** – Basic Flag\*

Plus the following Generic modules:

- **GE01A** – Fire Theory
- **GE01B** – Fire Practical
- **GE01C** – Electric Vehicle Awareness
- **GE01D** – Working Together
- **GE01E** – Upgrades and Assessments
- **GE01F** – Safe, Fair, Fun
- **GE01G** – First On Scene

\* Denotes a module which has a Race (RC) equivalent



## ATTENDANCE

- **20** days marshalling across a minimum of **24 months**
  - **5 days** must be in **Pit Lane/Start Line**
  - **5 days** must be in **Paddock/Assembly**

## ASSESSMENTS

- **1** practical assessment in **Pit Lane/Start Line** role
- **1** practical assessment in **Paddock/Assembly** role

(Note: Assessments must be carried out on separate days)

## TRAINING

Completion of the following Off Track modules:

- **OT02A** – Incident Response\*
- **OT02B** – Communication in Practice\*
- **OT02C** – Advanced Off Track

Plus the following Generic modules:

- **GE02A** – Supporting Your Peers

*\* Denotes a module which has a Race (RC) equivalent*

## ATTENDANCE

- **25** days marshalling across a minimum of **36 months**
  - **10 days** must be as a Chief or Deputy

## ASSESSMENTS

- **1** practical assessment in a **Chief** role

## TRAINING

Completion of the following Off Track modules:

- **OT03A** – Incident and Safety Management\*
- **OT03B** – Event Organisation and Structure\*

Plus the following Generic modules:


- **GE03A** – Leadership
- **GE03B** – Developing Others
- **GE03C** – Giving and Receiving Feedback
- **GE03D** – Report Writing

\* *Denotes a module which has a Race (RC) equivalent*



OVERVIEW – SPEED PATHWAY



 **Grade maintenance:** 2 days marshalling per year + 1 training event every 2 years

## ATTENDANCE

- **15** days marshalling across a minimum of **12 months**
  - **5 days** must be in an Off Track role

## ASSESSMENTS

- **1** practical assessment in an **On Track** role
- **1** practical assessment in an **Off Track** role

(Note: Assessments must be carried out on separate days)

## TRAINING

Completion of the following Speed modules:

- **SP01A** – Introduction to Speed
- **SP01B** – Communication in Theory
- **SP01C** – Introduction to Off Track (Speed)

Plus the following Generic modules:

- **GE01A** – Fire Theory
- **GE01B** – Fire Practical
- **GE01C** – Electric Vehicle Awareness
- **GE01D** – Working Together
- **GE01E** – Upgrades and Assessments
- **GE01F** – Safe, Fair, Fun
- **GE01G** – First On Scene

## ATTENDANCE

- **20** days marshalling across a minimum of **24 months**
- **5 days** must be in an Off Track role

## ASSESSMENTS

- **1** practical assessment in an **On Track** role
- **1** practical assessment in an **Off Track** role

(Note: Assessments must be carried out on separate days)

## TRAINING

Completion of the following Speed modules:

- **SP02A** – Incident Response
- **SP02B** – Communication in Practice
- **SP02C** – Advanced Off Track (Speed)

Plus the following Generic modules:

- **GE02A** – Supporting Your Peers

## ATTENDANCE

- **25** days marshalling across a minimum of **36 months**
  - All days must be in a **Post Chief** role

## ASSESSMENTS

- **1** practical assessment in **Post Chief** role

## TRAINING

Completion of the following Speed modules:


- **SP03A** – Incident and Safety Management
- **SP03B** – Event Organisation and Structure

Plus the following Generic modules:

- **GE03A** – Leadership
- **GE03B** – Developing Others
- **GE03C** – Giving and Receiving Feedback
- **GE03D** – Report Writing

OVERVIEW – KART PATHWAY



 **Grade maintenance:** 2 days marshalling per year + 1 training event every 2 years

## ATTENDANCE

- **15** days marshalling across a minimum of **12 months**
  - Days must be a range of On Track and Off Track roles

## ASSESSMENTS

- **1** practical assessment in an **On Track** role
- **1** knowledge check in **Off Track** role

(Note: Assessments and knowledge check can be carried out on the same day)

## TRAINING

Completion of the following Speed modules:

- **KT01A** – Introduction to Kart
- **KT01B** – Communication in Theory
- **KT01C** – Reporting and Observing
- **KT01D** – Kart Flag

Plus the following Generic modules:

- **GE01A** – Fire Theory
- **GE01B** – Fire Practical
- **GE01C** – Electric Vehicle Awareness
- **GE01D** – Working Together
- **GE01E** – Upgrades and Assessments
- **GE01F** – Safe, Fair, Fun
- **GE01G** – First On Scene



## ATTENDANCE

- **20** days marshalling across a minimum of **24 months**
  - Days must be a range of On Track and Off Track roles

## ASSESSMENTS

- **1** practical assessment in an **On Track or Off Track** role
- **1** knowledge check in **On Track or Off Track** procedures

(Note: Assessments and knowledge checks can be carried out on the same day)

## TRAINING

Completion of the following Speed modules:

- **KT02A** – Incident Response
- **KT01B** – Communication in Practice

Plus the following Generic modules:

- **GE02A** – Supporting Your Peers

## ATTENDANCE

- **25** days marshalling across a minimum of **36 months**

## ASSESSMENTS

- **1** practical assessment as a **Senior Marshal**

## TRAINING

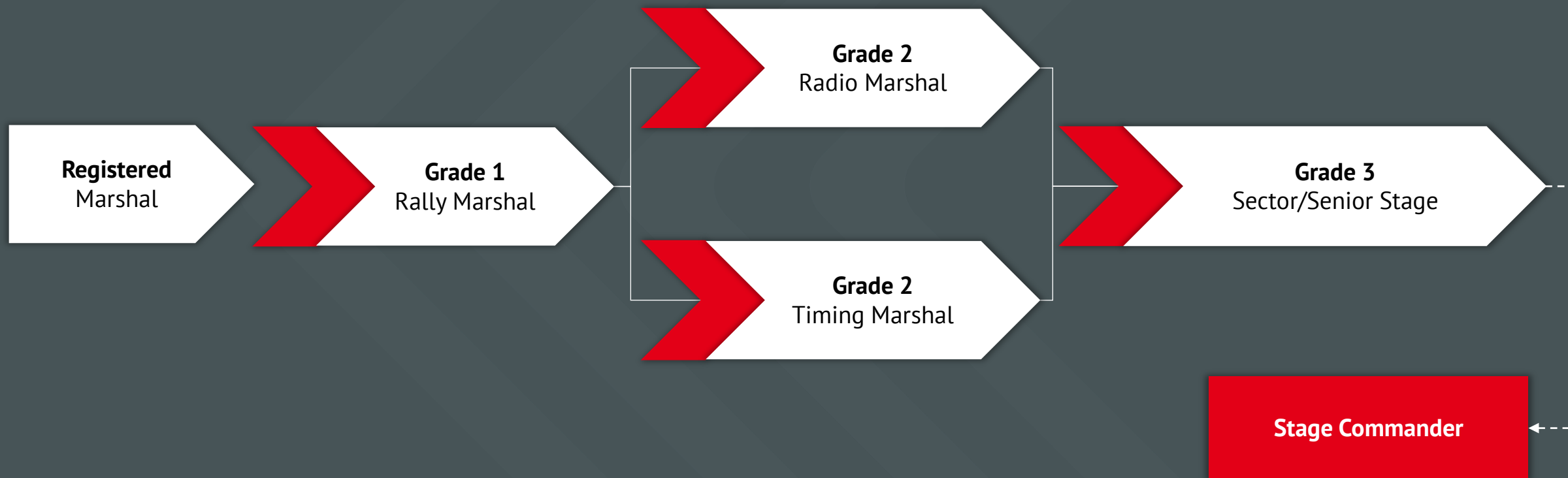
Completion of the following Speed modules:


- **KT03A** – Incident and Safety Management
- **KT03B** – Event Organisation and Structure

Plus the following Generic modules:

- **GE03A** – Leadership
- **GE03B** – Developing Others
- **GE03C** – Giving and Receiving Feedback
- **GE03D** – Report Writing

OVERVIEW – RALLY PATHWAY



 **Grade maintenance:** 2 days marshalling per year + 1 training event every 2 years

## ATTENDANCE

- 5 days marshalling across a minimum of **12 months**

## ASSESSMENTS

- **1** practical assessment

## TRAINING

Completion of the following Rally modules:

- **RY01A** – Introduction to Rally
- **RY01B** – Communication in Theory
- **RY01C** – Spectator Safety & Management

Plus the following Generic modules:

- **GE01A** – Fire Theory
- **GE01B** – Fire Practical
- **GE01C** – Electric Vehicle Awareness
- **GE01D** – Working Together
- **GE01E** – Upgrades and Assessments
- **GE01F** – Safe, Fair, Fun
- **GE01G** – First On Scene

## ATTENDANCE

- **10** days marshalling across a minimum of **24 months**
  - **3 days** must be spent shadowing a **Timing Marshal**

## ASSESSMENTS

- **1** practical assessment in a **Radio Marshal** role
- **1** knowledge check on timing procedures

(Note: Both the Radio and Timing grades may be undertaken simultaneously; in which case, both assessments must be practical)

## TRAINING

Completion of the following Speed modules:

- **RY02A** – Incident Response
- **RY02B** – Introduction to Rally Timing
- **RY02C** – Rally Radio

Plus the following Generic modules:

- **GE02A** – Supporting Your Peers

## ATTENDANCE

- **10** days marshalling across a minimum of **24 months**
  - **3 days** must be spent shadowing a **Radio Marshal**

## ASSESSMENTS

- **1** practical assessment in a **Timing Marshal** role
- **1** knowledge check on radio procedures

(Note: Both the Radio and Timing grades may be undertaken simultaneously; in which case, both assessments must be practical)

## TRAINING

Completion of the following Speed modules:

- **RY02A** – Incident Response
- **RY02D** – Introduction to Rally Radio
- **RY02E** – Rally Timing

Plus the following Generic modules:

- **GE02A** – Supporting Your Peers

## ATTENDANCE

- **15** days marshalling across a minimum of **36 months**
  - **2 days** must be as a supervised Stage Safety Officer
  - **2 days** must be as Stage Set-Up

## ASSESSMENTS

- **1** practical assessment in the **Sector Marshal** role

## TRAINING

Completion of the following Speed modules:

- **RY03A** – Incident and Safety Management
- **RY02B** – Event Organisation and Structure
- **RY03C** – Stage Set-Up
- **RY03D** – Advanced Radio
- **RY03E** – Advanced Timing

Plus the following Generic modules:

- **GE03A** – Leadership
- **GE03B** – Developing Others
- **GE03C** – Giving and Receiving Feedback
- **GE03D** – Report Writing

## REQUIREMENTS

- Held **Grade 3 Sector/Senior Stage** registration for a minimum of **12 months**
- Provide a **letter of recommendation** from a Motorsport UK Recognised Club

## ASSESSMENTS

- **1** practical assessment in the **Stage Commander** role

## TRAINING

- Acceptance on the Stage Commander Training Programme
- This is a full day course organised by Motorsport UK, supported by Motorsport UK Trainers.



## WHAT?

- Marshal Assessors are individuals who are able to carry out Marshal upgrade assessments; this includes both practical assessments and knowledge checks.
- Marshal Assessors can carry out up to two assessments in any one day.
- They can only carry out assessments in the discipline for which they are graded as an Assessor.

## REQUIREMENTS

- Held a **Grade 3** registration for a minimum of 12 months in their chosen discipline.
- Provide a **letter of recommendation** from a Motorsport UK Recognised Club.
- Approval for appointment by Motorsport UK
- Upon approval by Motorsport UK, completion of the **Marshal Assessor online course**.